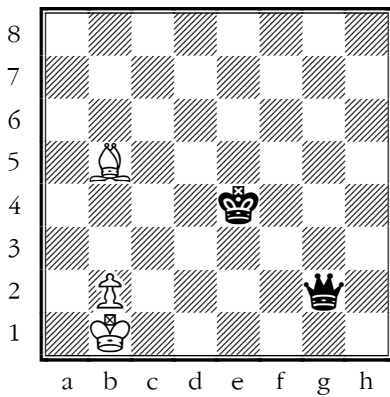
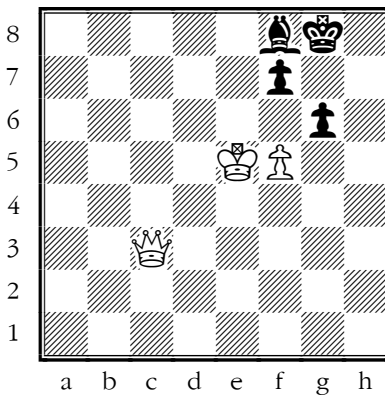


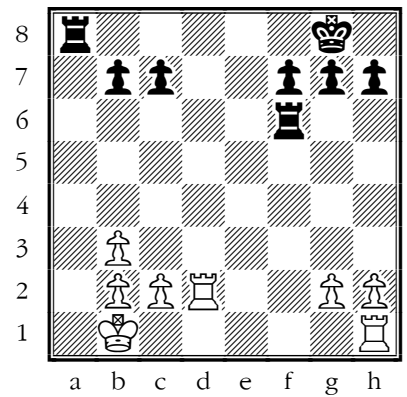
Test on skewers.



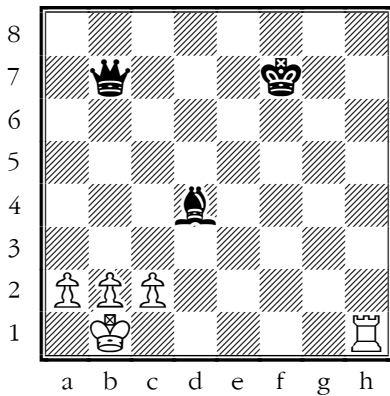
#1. White to move.
White wins the ♖. (Y/N)



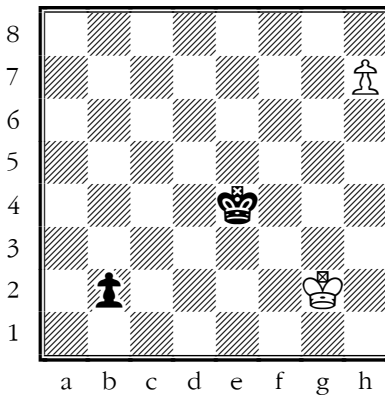
#2. Black to move.
Black wins the ♖. (Y/N)



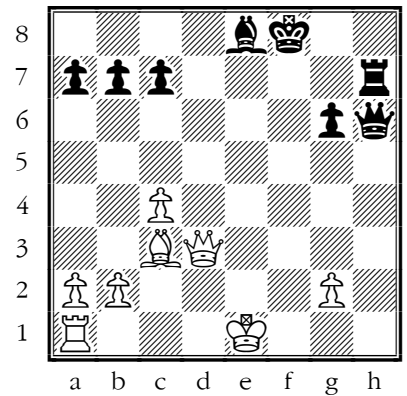
#3. Black to move.
Black can mate or win a ♖. (Y/N)



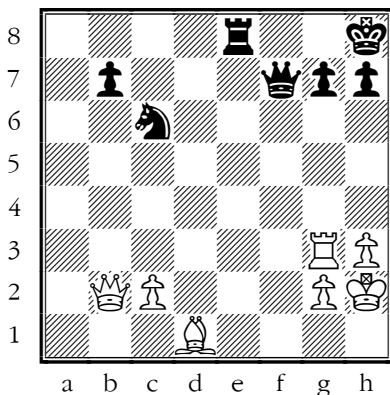
#4. White to move.
White wins the ♖. (Y/N)



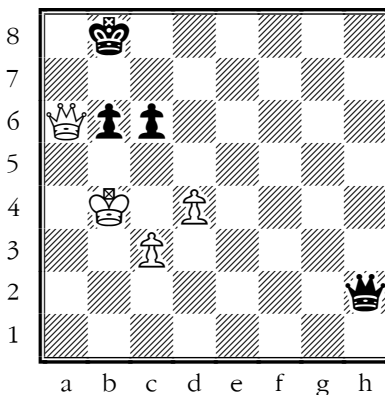
#5. White to move.
1.h8/♖ b1/♖ is a draw. (Y/N)



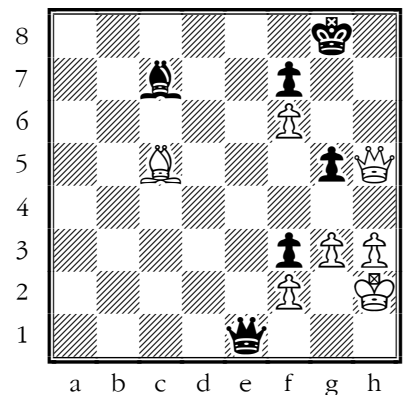
#6. Black to move.
Black wins a ♖ with 1...♖h1+ (Y/N)



#7. White to move.
White wins a ♖. (Y/N)

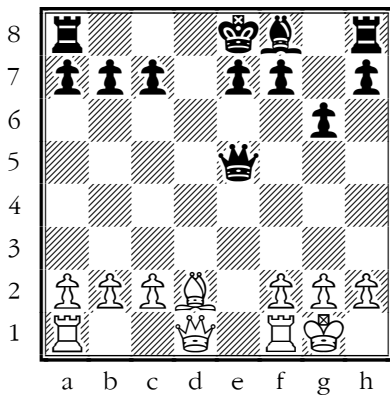


#8. Black to move.
Black wins the ♖. (Y/N)

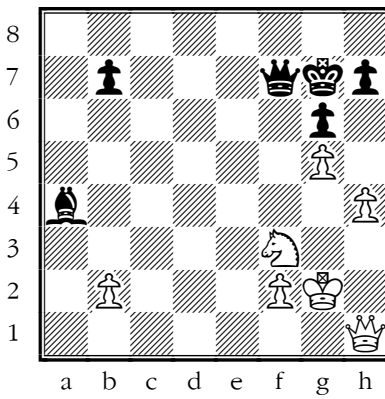


#9. Black to move.
Black wins the ♖ or mates. (Y/N)

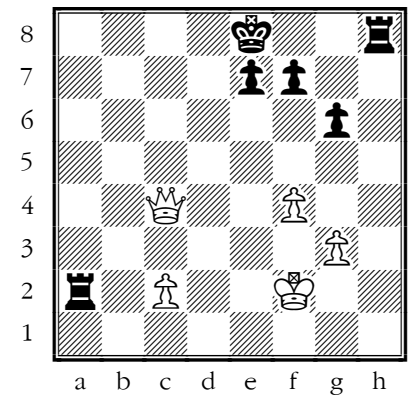
Exercises on skewers.



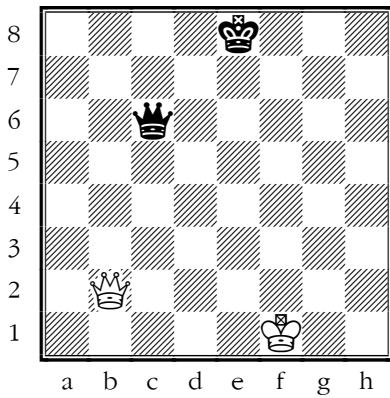
#1. White to move.



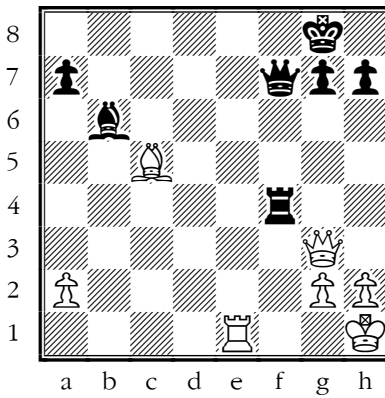
#2. Black to move.



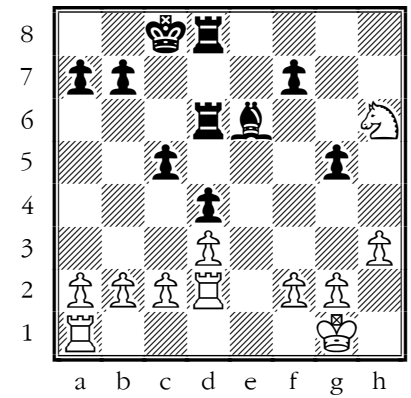
#3. Black to move.



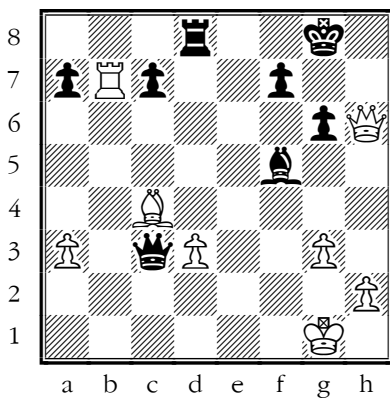
#4. Black to move.



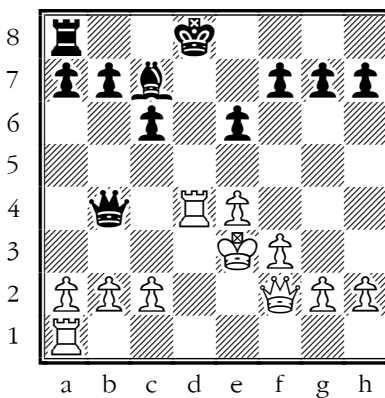
#5. White to move.



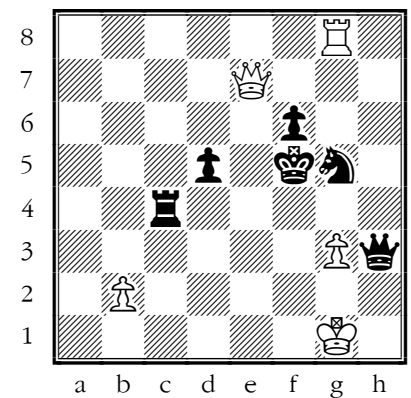
#6. Black to move.



#7. White to move.



#8. Black to move.



#9. White to move.