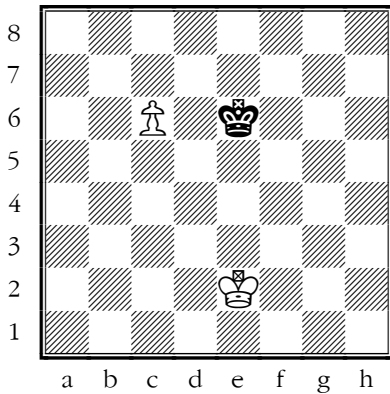
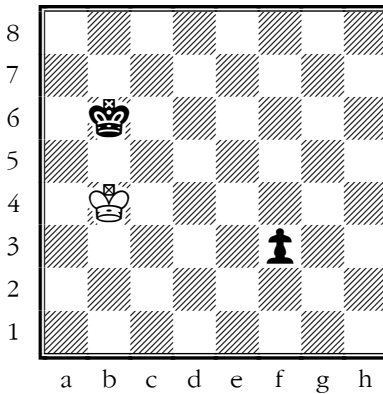


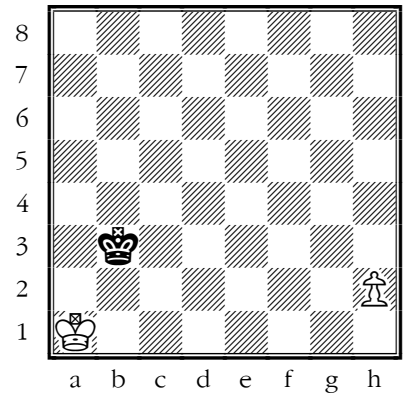
Test on promotion and breakthroughs



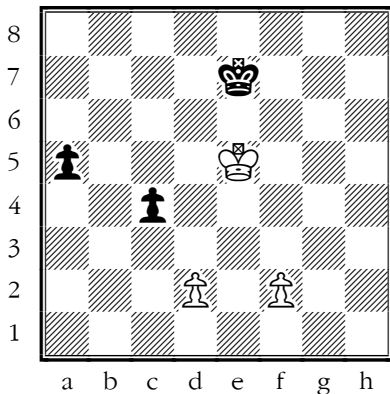
#1. White to move.
Is the ♔ in the square of the ♗? (Y/N)



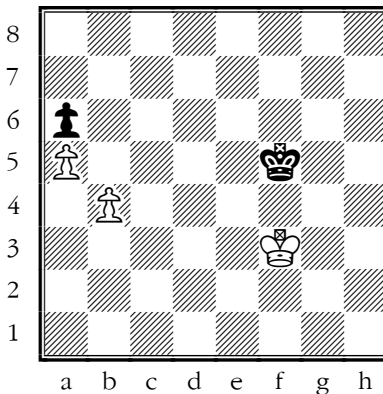
#2. White to move.
Can White catch up with the-♗? (Y/N)



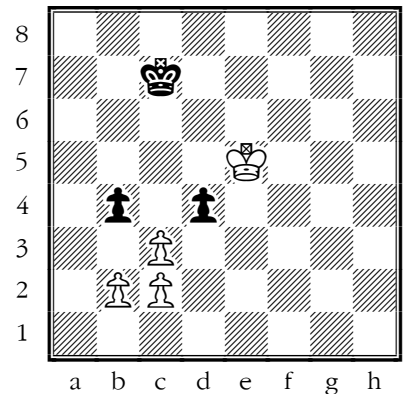
#3. Black to move.
White will promote his ♗. (Y/N)



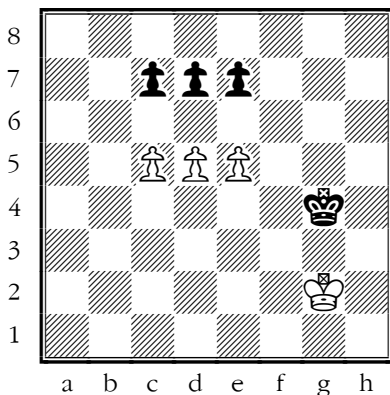
#4. Black to move.
(A) 1...a4 (B) 1...c3



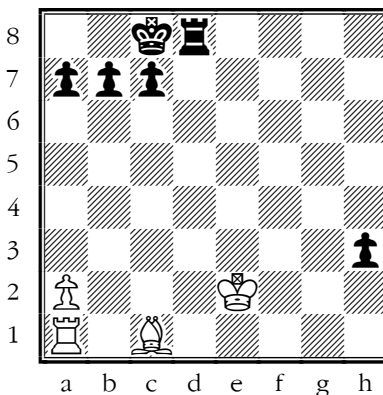
#5. White to move.
White wins with 1.b5 (Y/N)



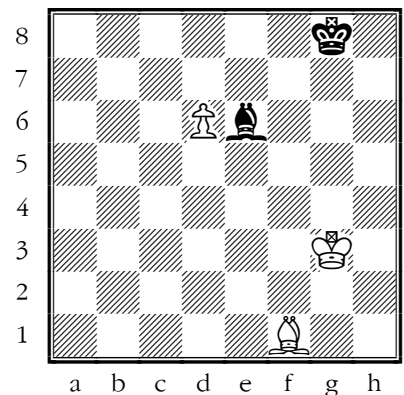
#6. Black to move.
(A) 1...bxc3 (B) 1...b3 (C) 1...dxc3 (D) 1...d3



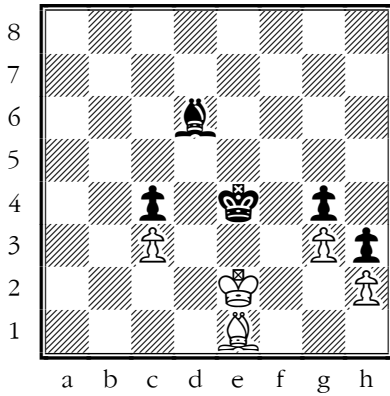
#7. White to move.
(A) 1.c6 (B) 1.d6 (C) 1.e6



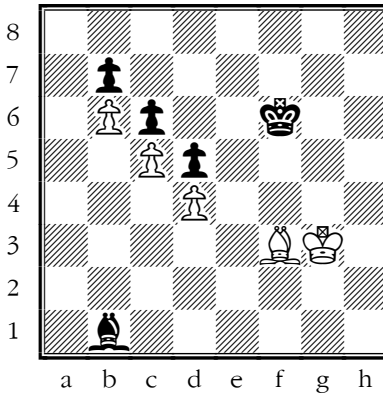
#8. Black to move.
(A) 1...♗d1 (B) 1...♗e8+ (C) 1...h2



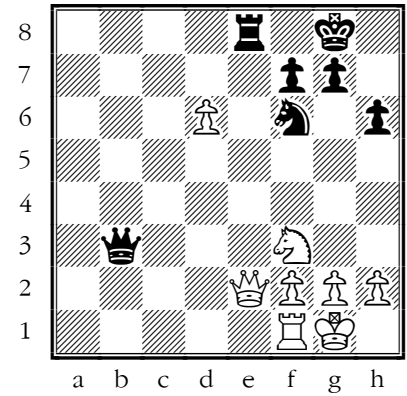
#9. White to move.
(A) 1.♗f4 (B) 1.♗b5 (C) 1.♗c4



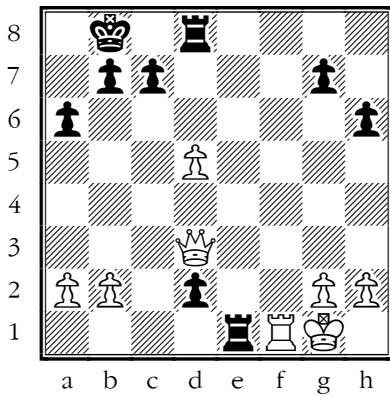
#10. **Black to move.**
1...♙e5! puts White in **Zugzwang**. (Y/N)



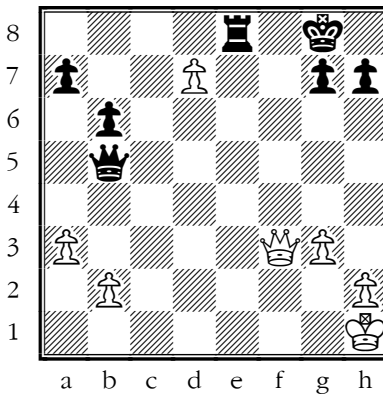
#11. **White to move.**
(A)1.♜f4 (B)1.♙g4 (C)1.♙xd5



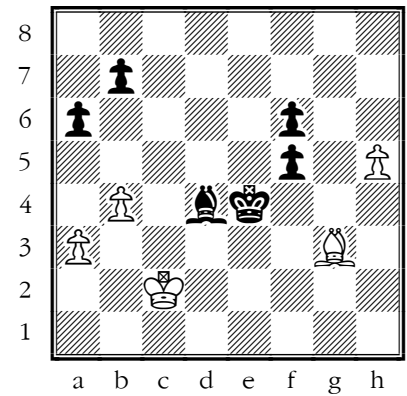
#12. **White to move.**
(A)1.♞d1 (B)1.d7 (C)1.♞xe8+



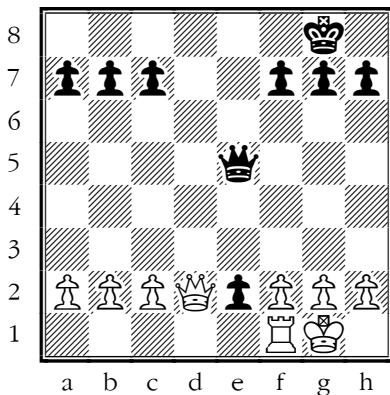
#13. **Black to move.**
(A)1...♞f8 (B)1...d1/♞ (C)1...♞xd5



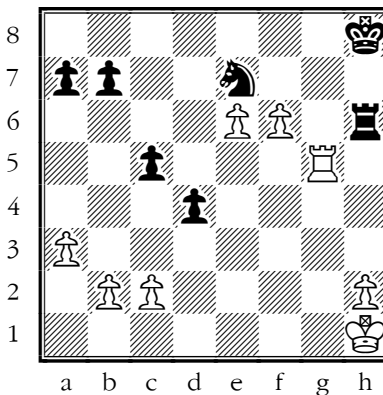
#14. **White to move.**
(A)1.dxe8/♞+ (B)1.♞d5+ (C)1.♞b3+



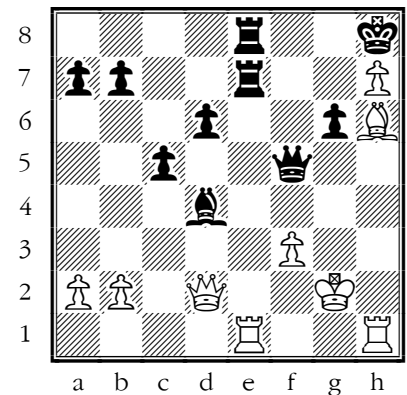
#15. **White to move.**
(A)1.h6 (B)1.♙f4 (C)1.♙d6 (D)1.♙f2



#16. **Black to move.**
Black wins with 1...♞xh2+. (Y/N)

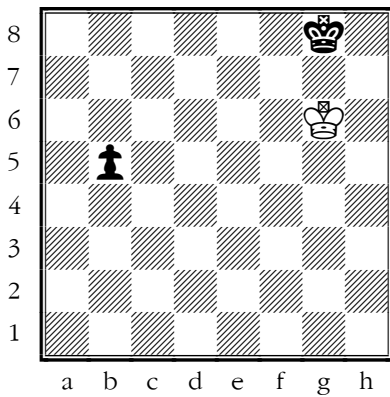


#17. **White to move.**
(A) 1.fxe7 (B) 1.f7 (C) 1.♞h5

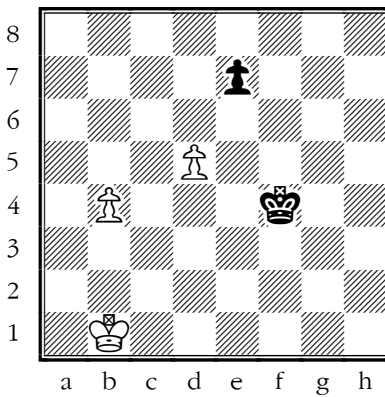


#18. **White to move.**
(A) 1.♞xe7 (B) 1.♙g7+ (C) 1.♞xd4+

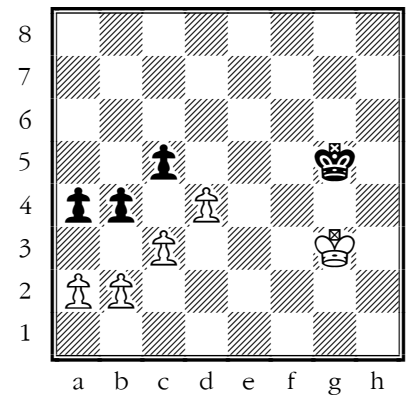
Exercises on promotion and breakthrough.



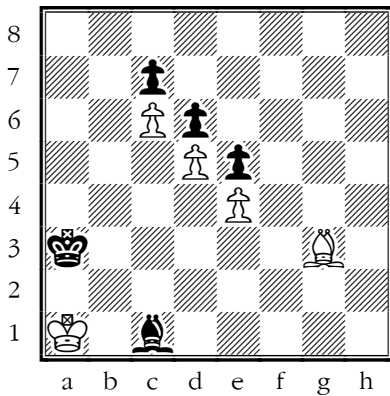
#1. *White to move.*



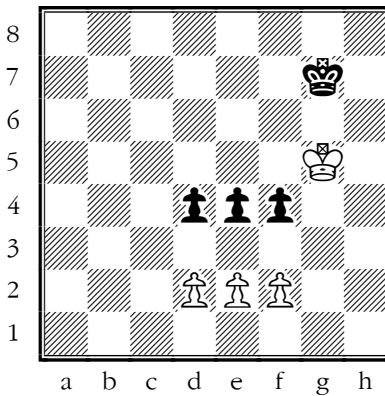
#2. *White to move.*



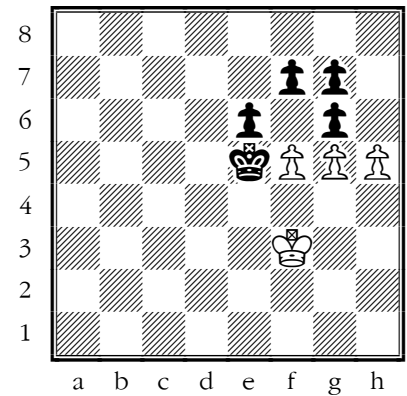
#3. *Black to move.*



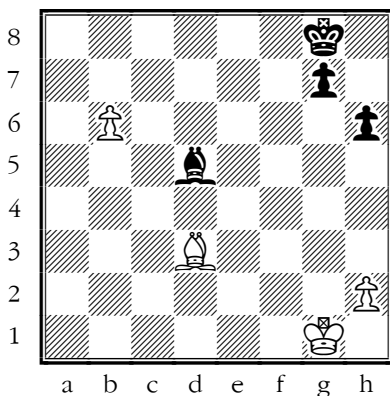
#4. *White to move.*



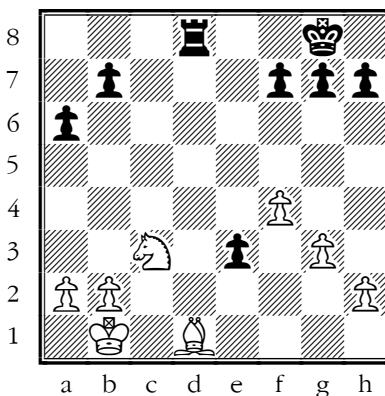
#5. *Black to move.*



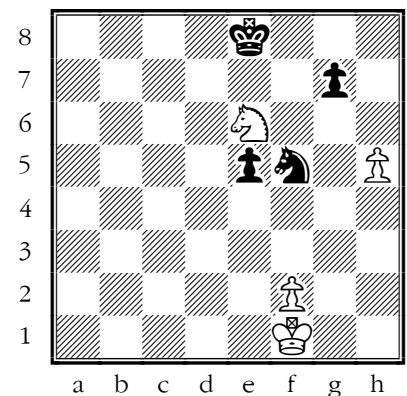
#6. *White to move.*



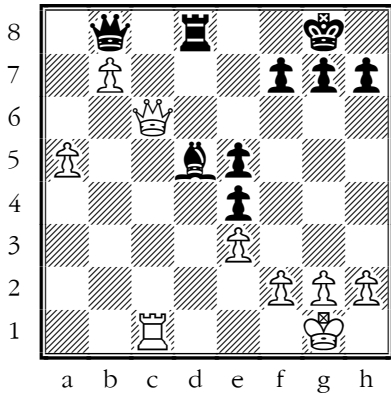
#7. *White to move.*



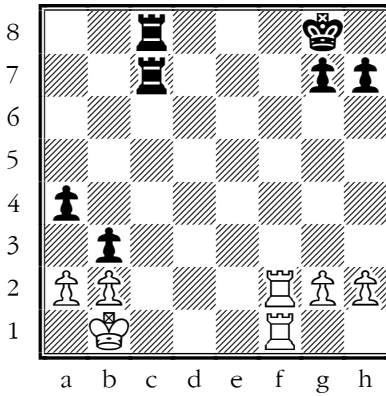
#8. *Black to move.*



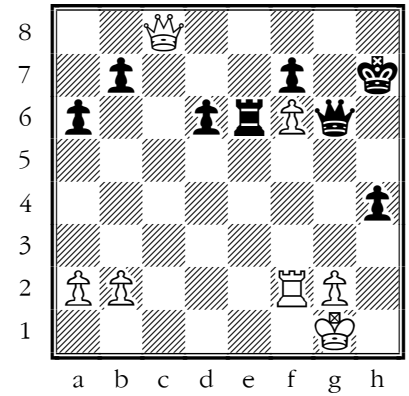
#9. *White to move.*



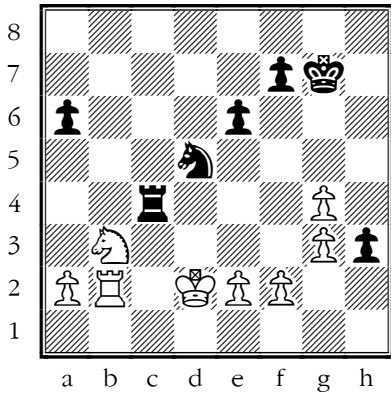
#10. *White to move.*



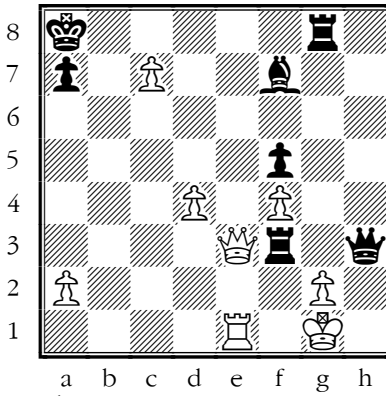
#11. *Black to move.*



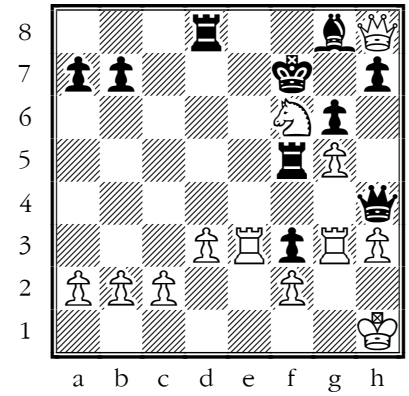
#12. *White to move.*



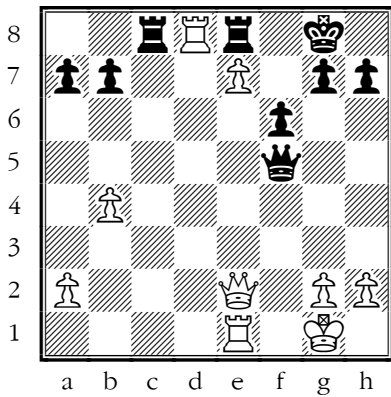
#13. *Black to move.*



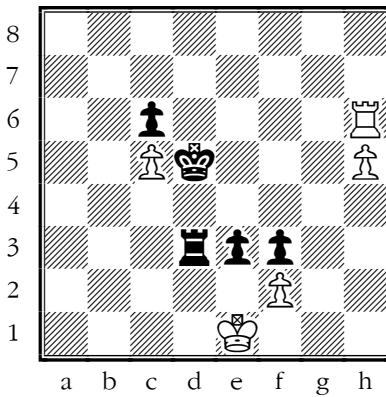
#14. *White to move.*



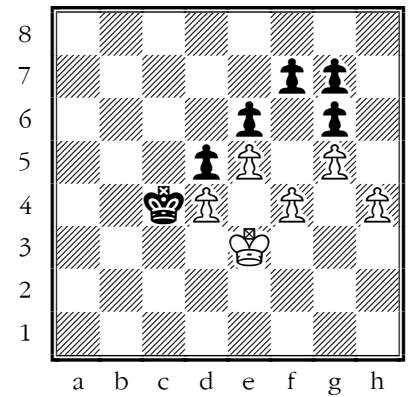
#15. *Black to move.*



#16. *White to move.*



#17. *Black to move.*



#18. *White to move*